

LK-ALBS, BK-ALBS, BH-ALBS series

Pressed steel castors, heavy-duty design, with top plate, wheel with Blickle Besthane® Soft polyurethane tread



230–600 kg

Bracket: LK/BK/BH series

- strong pressed steel, zinc-plated, blue-passivated, Cr6-free

Swivel bracket:

- double ball bearing in the swivel head
- strong central kingpin (from wheel Ø 125x50 mm)
- swivel head seal
- minimum swivel head play and smooth rolling characteristic and increased service life due to the special dynamic Blickle riveting process

Wheel: ALBS series

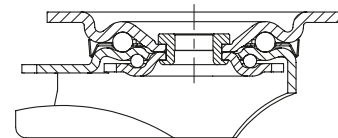
- tread: high-quality polyurethane elastomer Blickle Besthane® Soft, hardness 75 Shore A, colour blue, non-marking, non-staining
- wheel centre: die-cast aluminium, colour silver grey

Additional details:

- bracket series: page 92
- brakes: page 112–113
- wheel series: page 319
- bearing types: page 84–85

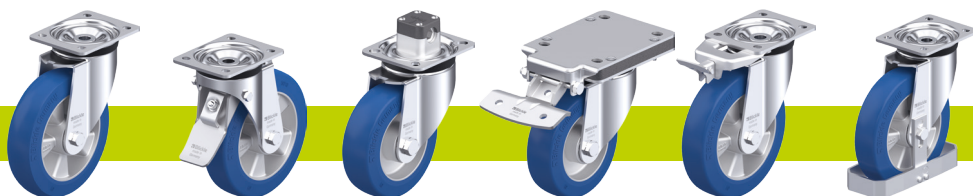


5



Swivel castors	Fixed castors	Swivel castors with "stop-fix" brake	Wheel Ø [mm]	Wheel width [mm]	Load capacity [kg]	Bearing type	Total height [mm]	Plate size [mm]	Bolt hole spacing [mm]	Bolt hole Ø [mm]	Offset swivel castor [mm]
LK-ALBS 82K	BK-ALBS 82K	LK-ALBS 82K-FI	80	40	230	ball bearing	110	100 x 85	80 x 60	9	40
LK-ALBS 100K-1	BK-ALBS 100K-1	LK-ALBS 100K-1-FI	100	40	320	ball bearing	130	100 x 85	80 x 60	9	45
LK-ALBS 100K-3	BK-ALBS 100K-3	LK-ALBS 100K-3-FI	100	40	320	ball bearing	130	140 x 110	105 x 75–80	11	45
LK-ALBS 125K-1	BK-ALBS 125K-1	LK-ALBS 125K-1-FI	125	40	350	ball bearing	155	100 x 85	80 x 60	9	48
LK-ALBS 125K-3	BK-ALBS 125K-3	LK-ALBS 125K-3-FI	125	40	350	ball bearing	155	140 x 110	105 x 75–80	11	48
LK-ALBS 127K	BH-ALBS 127K	LK-ALBS 127K-FI	125	54	450	ball bearing	170	140 x 110	105 x 75–80	11	55
LK-ALBS 150K	BH-ALBS 150K	LK-ALBS 150K-FI	150	50	500	ball bearing	197	140 x 110	105 x 75–80	11	60
LK-ALBS 160K	BH-ALBS 160K	LK-ALBS 160K-FI	160	50	580	ball bearing	202	140 x 110	105 x 75–80	11	60
LK-ALBS 180K	BH-ALBS 180K	LK-ALBS 180K-FI	180	50	600	ball bearing	223	140 x 110	105 x 75–80	11	65
LK-ALBS 200K	BH-ALBS 200K	LK-ALBS 200K-FI	200	50	600	ball bearing	245	140 x 110	105 x 75–80	11	62

Versions / options



	with extremely crowned tread	with "stop-top" brake	with "central-stop" central brake system	with "ideal-stop" brake total height +17 mm	with directional lock (separate) 1x 360°	with steel foot guard
Technical description page	55	112	113	112	115	116
Product code suffix	-CO	-ST	-CS11	-IS	see **	-FS
Available for	wheel Ø 125x40, 160, 200 mm, others upon request	all	wheel Ø 100–125x40 mm	Ø 100, 125, 160, 200 with plate 140x110*	for wheel Ø and plate dimensions, see**	upon request

* Synthetic adapter plate to balance out total height for swivel and fixed castors without "ideal-stop" brake: **product code AP3-17**

** **RI-05.01** for wheel Ø 80–125 mm with plate 100x85 mm, **RI-03.03** for wheel Ø 100–125x40 mm with plate 140x110 mm, **RI-05.03** for wheel Ø 125x54–200 mm (Only for swivel castors without brake or swivel castor with "stop-top" and "central-stop" brake upon request)